



HOTELS & RESORTS



DISTÂNCIAS • DISTANCES

12 km	Palmela	Palmela
14 km	Setúbal	Setúbal
55 km	Lisboa	Lisbon

GPS N 38°34'11.0" | W 8°48'10.9"
Urbanização Golfe do Montado, Lote 1
2950-051 (Algeruz) Palmela
+ 351 265 708 150 • reservas@montadoresort.com
WWW.MONTADORESORT.COM



A COMBINAÇÃO PERFEITA ENTRE GOLFE E LAZER THE PERFECT COMBINATION OF GOLF AND LEISURE

O Montado Hotel & Golf Resort é um destino de eleição para aproveitar o melhor da região e sair da rotina. Com 90 quartos e 3 suites, todos com varanda, destaca-se o campo de golfe que tem sido anfitrião das mais importantes provas que se disputam em Portugal, famoso pelo *green* do buraco 18 localizado numa ilha. Dispõe ainda de 2 salas de reuniões com luz natural e totalmente equipadas, um restaurante com vista panorâmica e capacidade para 140 pessoas, bar com esplanada, Spa, ginásio e parque de estacionamento gratuito. Um lugar privilegiado para eventos de negócios, reuniões, congressos e *team building* ou, ainda, para celebrar uma data tão especial, como um casamento, aniversário ou batizado. Situado na Costa Azul, numa região famosa pelos seus vinhos, natureza, sabores tradicionais e magníficas praias.

The Montado Hotel & Golf Resort is a perfect destination to enjoy the best of the region and to get out of your everyday routine. With 90 rooms and 3 suites, all of them with balcony, the golf course stands out, had been hosted the most important competitions in Portugal, famous for the green of hole 18 located on an island. It also features 2 fully equipped meeting rooms with natural light, a restaurant with panoramic view and capacity for 140 people, bar with a terrace, Spa, gym and free parking. A privileged place for business events, meetings, congresses and team building, or simply to celebrate your special date, such as a wedding, an anniversary or a baptism. Located at the Costa Azul, in a region famous for its wines, nature, traditional flavors and magnificent beaches.



FACTS & FIGURES



90 QUARTOS E 3 SUITES



ESPAÇOS & SERVIÇOS

Campo de Golfe com 18 buracos, Par 72: Driving Range, Putting Green (2), Chipping and Pitching area, Bunker zone e Zona de jogo curto
Restaurante All in One e Bar Pitch and Putt
Piscina interior e Ginásio
Cabeleireiro, Loja e Lavandaria



EXPERIÊNCIAS

Golfe • Praias de Troia e da Arrábida • Academia de golfe • Passeios pedestres • Desportos náuticos e de aventura • Património de Palmela e Setúbal • Reserva Natural do Estuário do Sado • Parque Natural da Arrábida • Visitas a caves/adegas e degustação de vinhos • Gastronomia regional



SERVIÇOS MICE

2 Salas de reuniões (77 e 144 m²)
Equipamento audiovisual e material de apoio
Estacionamento privativo
Wi-Fi gratuito
Águas, blocos e canetas incluídos nas reuniões
Organização de eventos
Para eventos personalizados, contactar o hotel.



MENUS

Buffets • Cocktails • Coffee break • Menus completos • Menus feitos à medida
Para informações detalhadas e preços, consultar o hotel.



90 ROOMS & 3 SUITES



AREAS & SERVICES

18 holes golf course, Par 72: Driving Range, Putting Green (2), Chipping and Pitching area, Bunker zone and Short game zone
All in One Restaurant and Pitch and Putt Bar
Indoor swimming pool and Gym
Hair stylist, Shop and Laundry



EXPERIENCES

Golf • Troia and Arrábida Beaches • Golf academy • Walking tours • Water and adventure sports • Heritage of Palmela and Setúbal • Sado Estuary Natural Reserve • Arrábida Natural Park • Visits to cellars/wineries and wine tasting • Regional gastronomy



MICE SERVICES

2 Meeting rooms (77 and 144 m²)
Audiovisual equipment and support material
Private parking
Free Wi-Fi
Water, notebook and pens included in meetings
Events organization
For tailormade events, contact the hotel.



MENUS

Buffets • Cocktails • Coffee breaks • Full menus • Custom menus
For further information and prices, please contact the hotel.

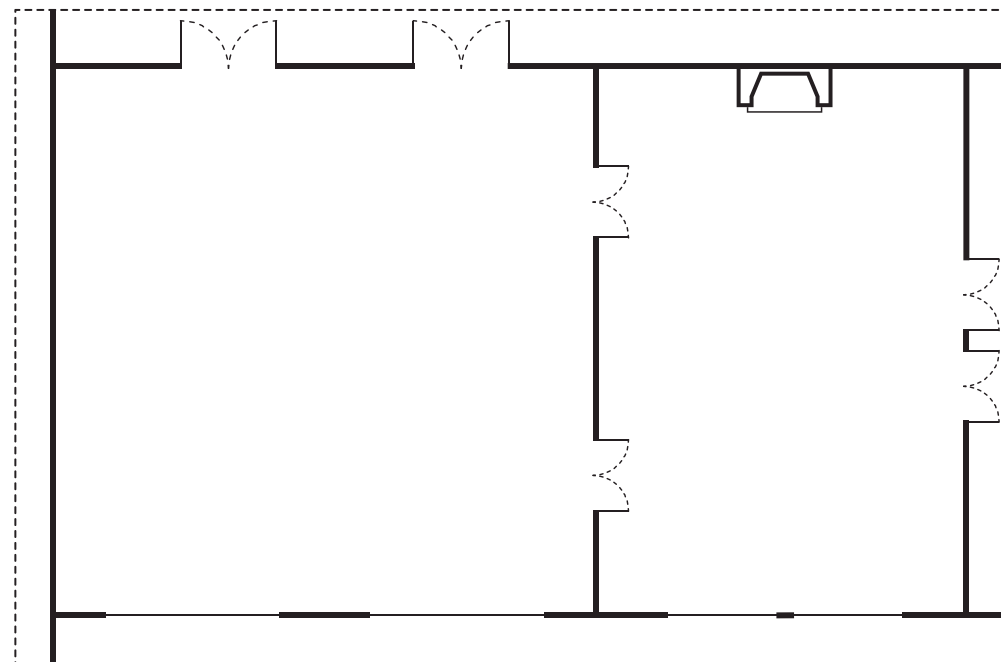
PLANTAS SALAS

FLOOR PLANS

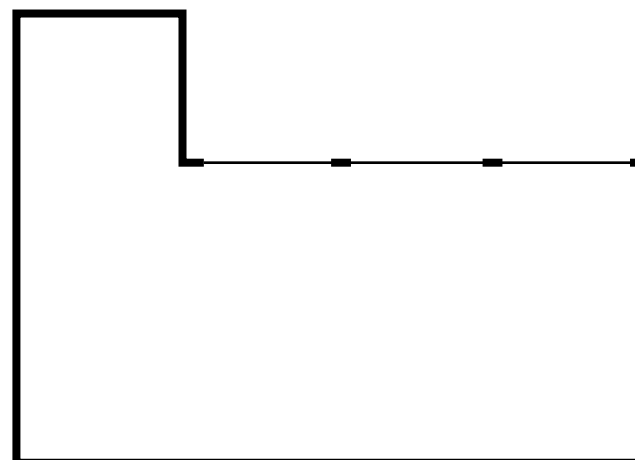


EAGLE

BIRDIE



ALBATROZ



CAPACIDADE CAPACITY

	MEDIDAS (CXL) MEASURES (LXW)	M2	LUZ NATURAL NATURAL LIGHT	PLATEIA THEATRE	ESCOLA CLASSROOM	"U"	COCKTAIL	MESA ÚNICA BOARDROOM	BANQUETE BANQUETING
Eagle	12m X 12m	144	✓	120	50	40	140	40	-
Birdie	11m X 07m	77	✓	40	30	24	40	40	-
Albatroz	-	142	✓	-	-	-	-	-	78



EQUIPAMENTOS E SERVIÇOS EQUIPMENT AND SERVICES

As salas dispõem de:

- Projetor
- Tela
- Sistema de som [a pedido]
- Microfones [a pedido]
- Wi-Fi
- LCD
- Flipchart

Confirmar previamente a disponibilidade dos equipamentos e serviços diretamente com o Hotel. Para material e serviços adicionais, contactar o Hotel.

The rooms have:

- Datashow
- Screen
- Sound system [on request]
- Microphones [on request]
- Wi-Fi
- LCD
- Flipchart

For availability of the equipments and services please contact the Hotel directly and in advance. For additional material and services, contact the Hotel.